

Collaborating with Science and Methods in the Cool Farm Alliance

Dr. Megan McKerchar

Methods and Science Manager

Please contact me for any questions or
ideas to collaborate with:
methods@coolfarmtool.org



**Cool
Farm**

OUR MISSION

“

To enable millions of growers around the world to make more informed on-farm decisions that reduce their environmental impact.

**Cool
Farm**

Academic Partners

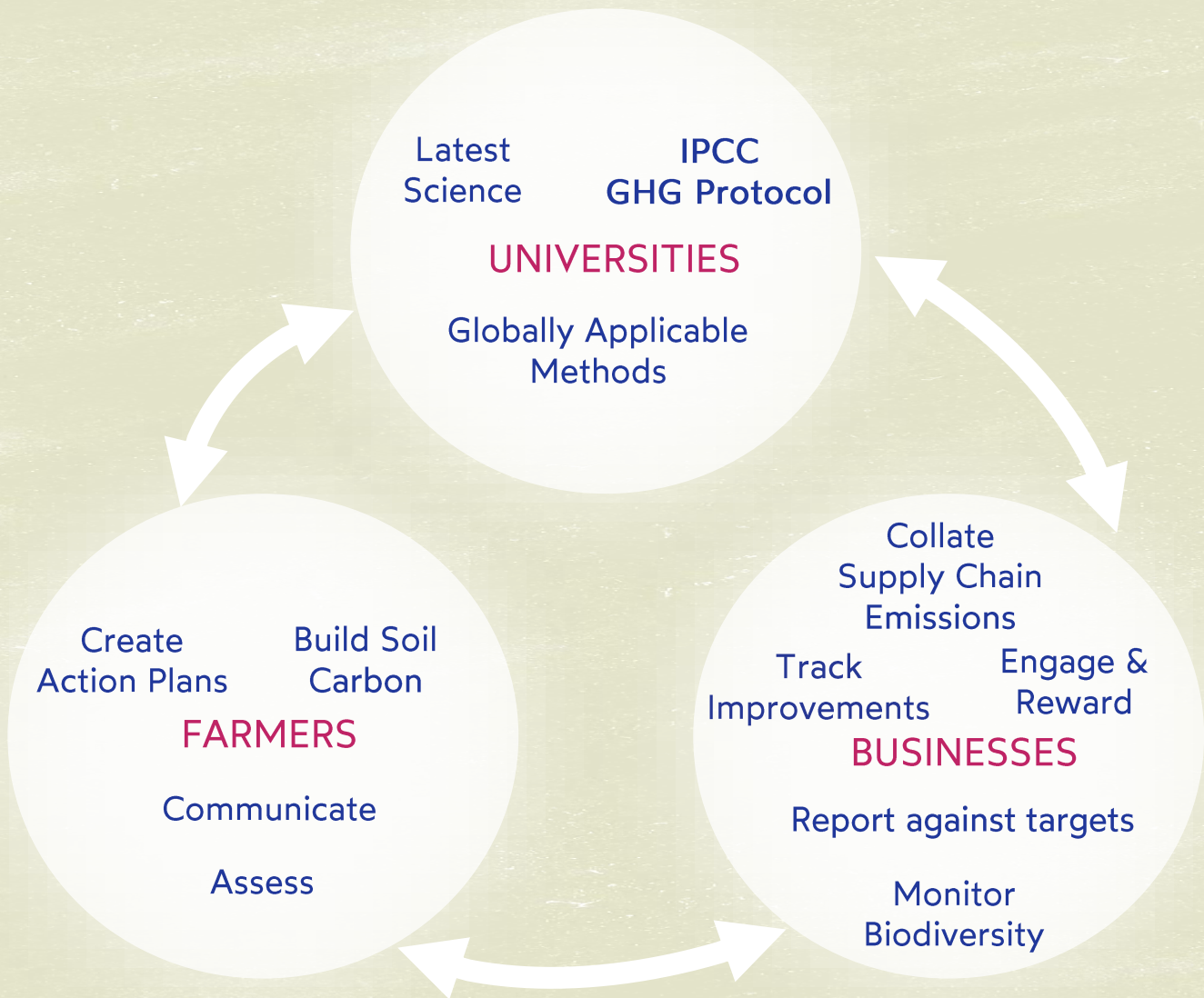
- University of Aberdeen
- University of Cambridge
- University of Edinburgh
- GFZ German Centre for Geosciences
- University of Oxford
- Wageningen University & Research
- Colorado State University

Members

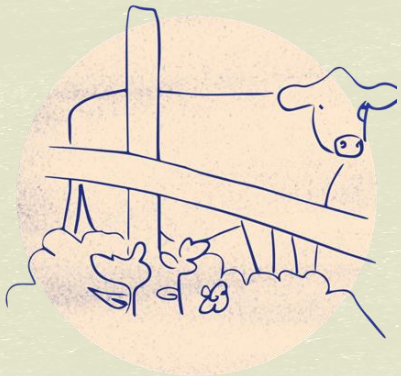
134 MEMBERS & PARTNERS (Status 04/2022)



Cool Farm Ecosystem: Where research leads to impact



Scope:



Livestock
GHG



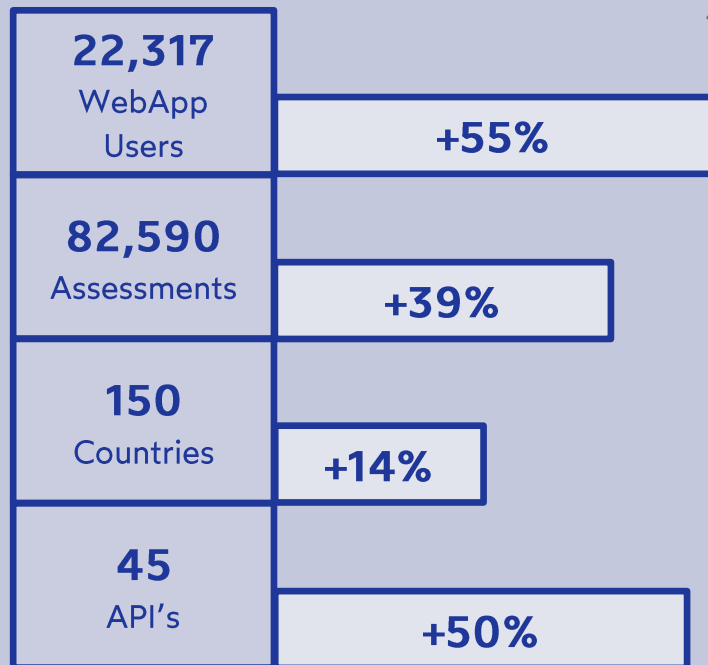
Biodiversity
Temperate Forest
Semi-Arid Mediterranean
Soon: Beta Tropical Forest



Crops
GHG + Water + Food
Loss & Waste
Future: Perennials

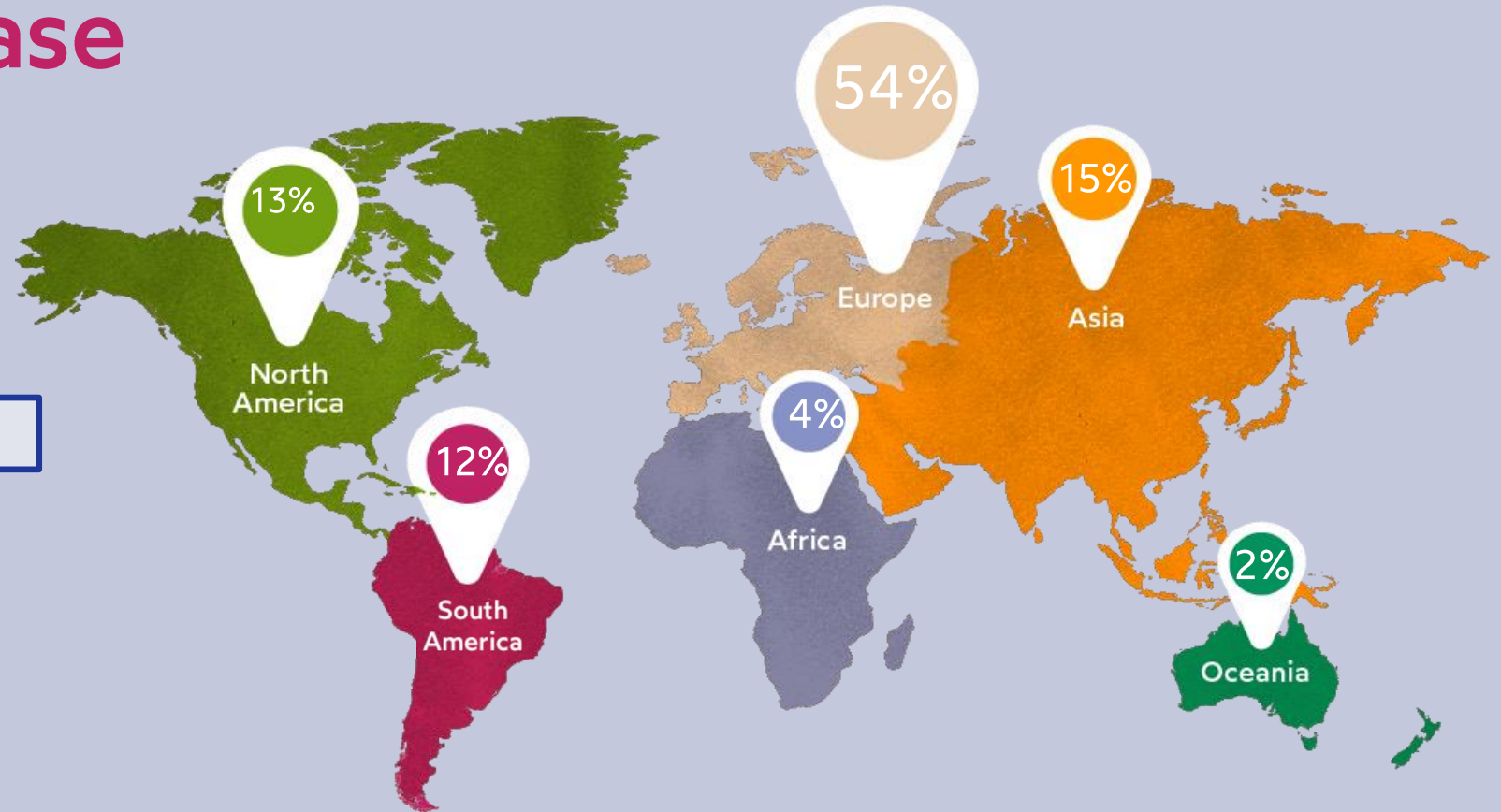


Global User Base



Status: End of 2021

Increase between March & December 2021



Science Snap Shot – Existing 3 PhD Students

- Marte Nikolaisen - University of Aberdeen
 - The focus is on an improved global rice model for the CFT, which considers site specific variables (e.g., soil texture, crop duration, planting method) and reliably predict emissions from rice grown in temperate as well as tropical condition. The development and evaluation of the global CH₄ model was completed and currently Marte is writing the scientific paper. Likely this improved rice method will be added to CFT 3.0 in 2024.
- Jordi Buckley - Imperial College London
 - Seeking farm data to support investigation into crop-specific 2D and 3D modelling of nutrient flows across catchments, ultimately leading to a rule-of-thumb for use in the water module.
- Helen Hughes - Edinburgh University
 - The focus is on soil C estimation methods for arable land. Helen is looking at new model approaches for a number of practices and geographies, hoping to develop methods that are relevant and accessible to farmers. Helen also chairs the Soil WG.

Thank you

Questions?

Contact us at:

methods@coolfarmtool.org